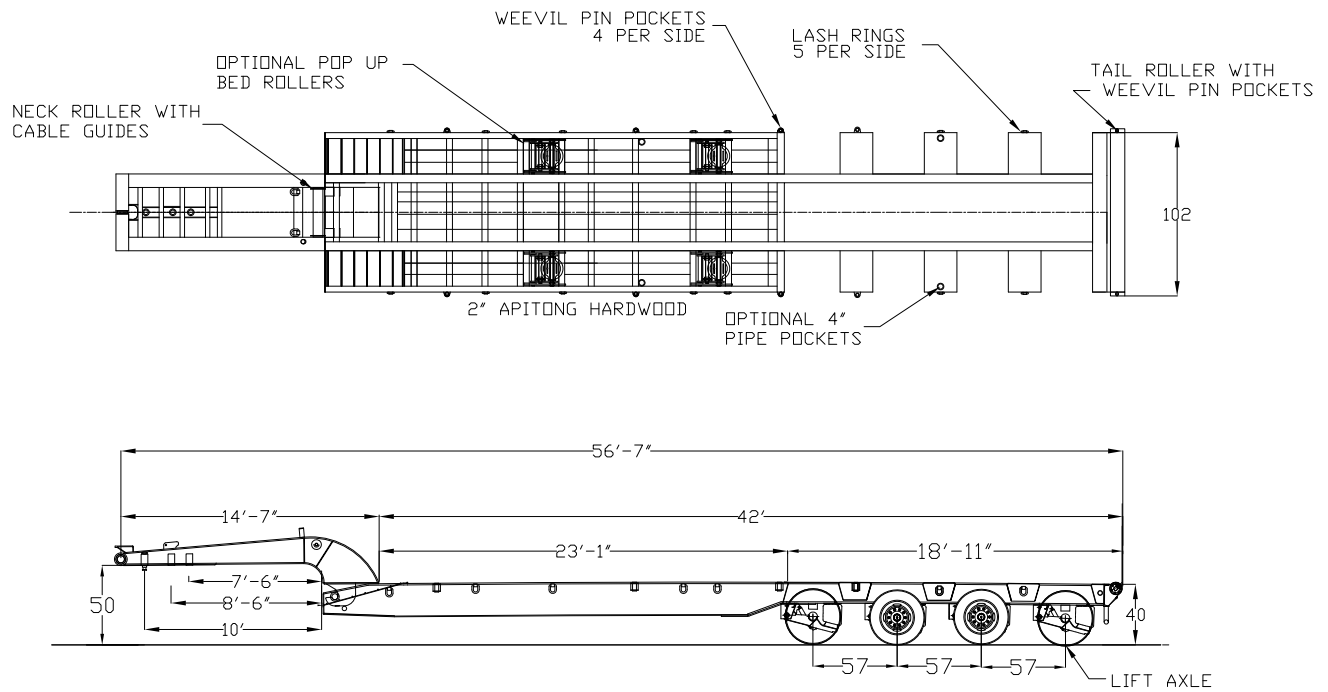




60 TON OIL FIELD DETACHABLE GOOSNECK



60 TON CAPACITY
 MECHANICAL DETACHABLE NECK
 REMOVABLE 2" KINGPIN

16.5 X 7" BRAKES
 25,000 LB CAPACITY AXLES-3/4"
 SPRING BRAKES-2 AXLES

255/70R 22.5 (LRH) TIRES
 8.25 X 22.5 STEEL DISC WHEELS
 AIR RIDE SUSPENSION WITH
 AUTO AND MANUAL CONTROLS

8-5/8" X 7/8" WALL- ROLLING TAIL
 DOUBLE OVER LOAD ROLLERS
 DOUBLE SPHERICAL ROLLER BEARINGS
 H.D. PIPE BUMPER