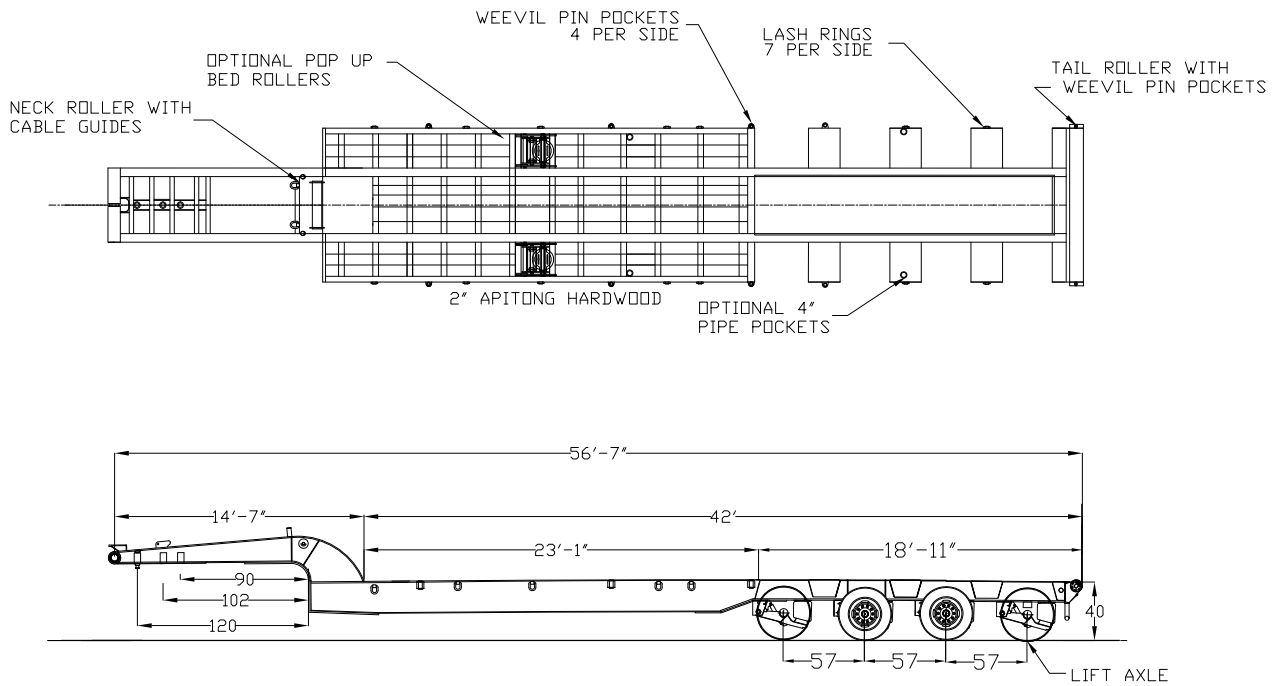




### 60 TON OIL FIELD FIXED GOOSNECK



60 TON CAPACITY  
OILFIELD FIXED NECK  
REMOVABLE 2" KINGPIN

16.5 X 7" BRAKES  
25,000 LB CAPACITY AXLES-3/4"  
SPRING BRAKES-2 AXLES

255/70R 22.5 (LRH) TIRES  
8.25 X 22.5 STEEL DISC WHEELS  
AIR RIDE SUSPENSION WITH  
AUTO AND MANUAL CONTROLS

8-5/8" X 7/8"WALL- ROLLING TAIL  
DOUBLE OVER LOAD ROLLERS  
DOUBLE SPHERICAL ROLLER BEARINGS  
H.D. PIPE BUMPER